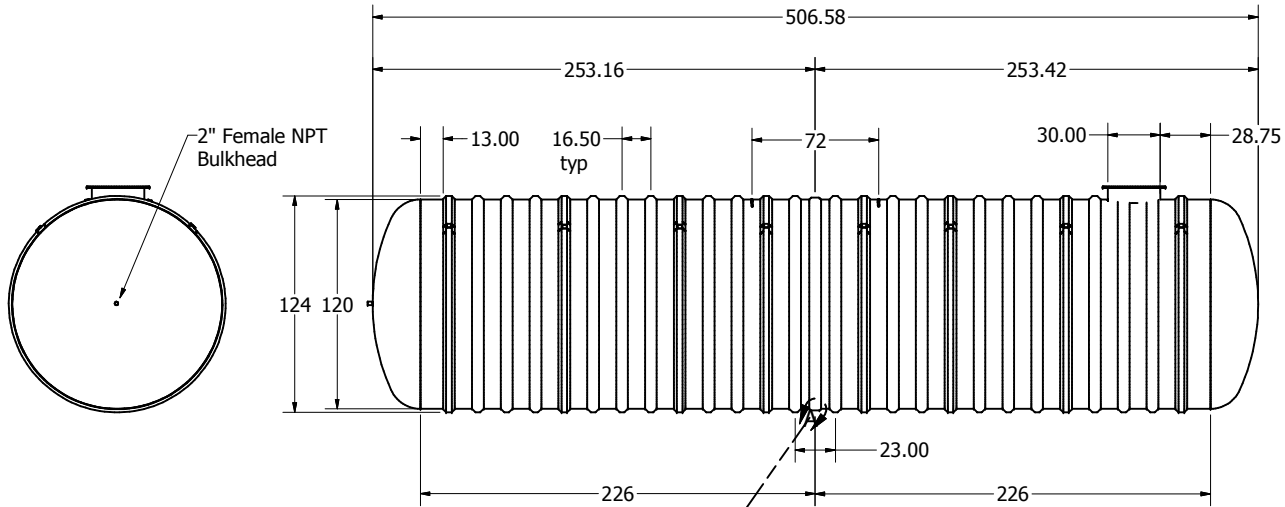
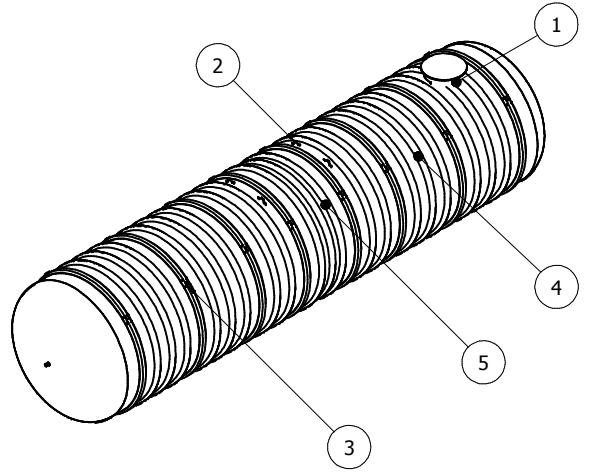
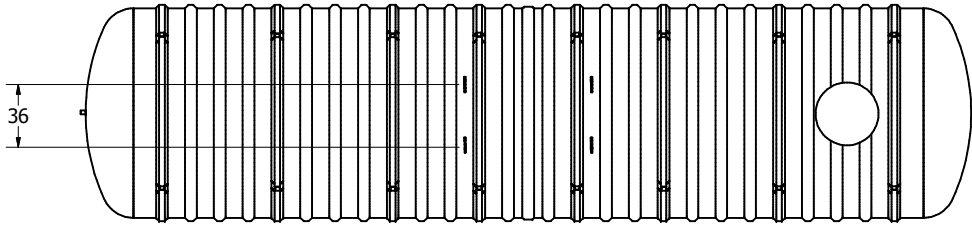


Parts List				
ITEM	QTY	PART NUMBER	DESCRIPTION	
1	1	C-COLLAR-30IN	30"D COLLAR	
2	4	LIFT-LUG-8-10	LIFT LUG	
3	8	C-RIB-GUIDE	STRUCTURAL RIB WITH ANCHOR GUIDE	
4	18	C-RIB	STRUCTURAL RIB	
5	1	SEAM-10FT	SEAM	



6mm x 200mm min. FRP bond on Outside

SECTIONAL JOINT DETAIL A
SCALE 1/25

OPTIONAL	PARTS
30"X12" EXTENSION	ANCHORS
30"X30" EXTENSION	FOAM INSULATION
30"X60" EXTENSION	LOCK BAR
30"X84" EXTENSION	OPTIONAL FITTING(S)
ALARM	PUMP STAND

DRAWN	MPS	2/28/2008
CHECKED		
QA		
MFG		
DCL		
APPROVED		
DCL		
CAPACITY	LENGTH	
90,920L	42' 3"	
(20,000 IG)		

TITLE		BX20000W UNDERGROUND FIBREGLASS WATER CISTERN	
			
<small>Drinking Water NSF/ANSI 61</small>		DWG NO	REV
SIZE	C	BX20000W	1
SCALE		SHEET 1 OF 1	