

Fibreglass Canada

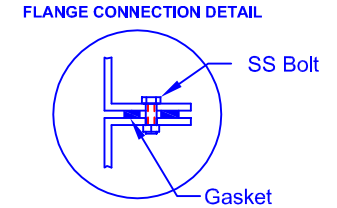
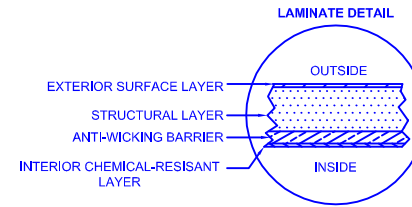
Div. of FRP Manufacturing Inc.

W-1500 UNDERGROUND FIBREGLASS WATER CISTERN

Overall Length: Approx. 4,267 mm (14')

Overall Weight: Approx. 268 kg (590 lbs)

Overall Capacity: Approx. 6,820 L (1,500 Imp Gal, 1,800 US Gal)

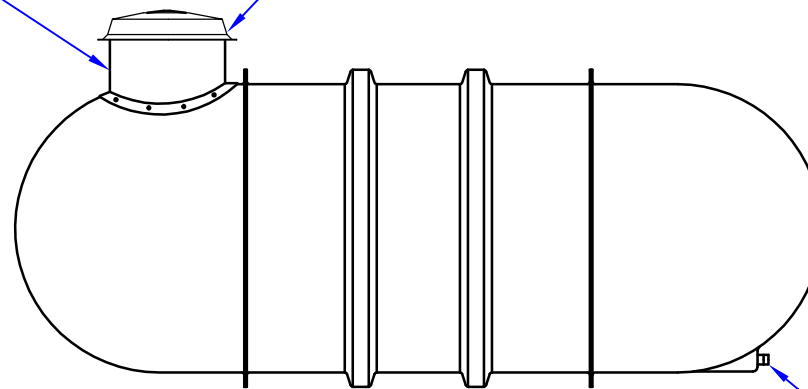


One piece manway is available in 12", 30", 60", and 84" size. Manway attaches directly to tank creating a solid sealed connection.

24" Opening c/w lid & 8" poly lid



Drinking Water
NSF/ANSI 61



5' [1524mm] i.d.
5'-6" [1676mm] o.d.

1 1/4" Female NPT Bulkhead

48" [1219mm] 72" [1829mm] 48" [1219mm]

14' [4267mm]

These tanks are made to withstand up to 7' of cover

Water cisterns have a gloss interior for purity of water and prevention of bacterial growth.