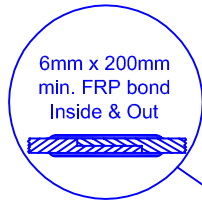


MATERIALS LIST					
ITEM	QTY	DESCRIPTION	ITEM	QTY	DESCRIPTION
Ⓐ	1	C-DOME-8-1000S	Ⓑ	1	C-DOME-8-1000S-30COL
Ⓒ	1	STEEL LIFTING LUG	Ⓓ	1	4" PVC-DWV ELBOW
Ⓔ	1	C-LID-30IN-STD-W/8" POLY NONVENTED LID			

\* TANK COMES FULLY ASSEMBLED FROM FACTORY \*

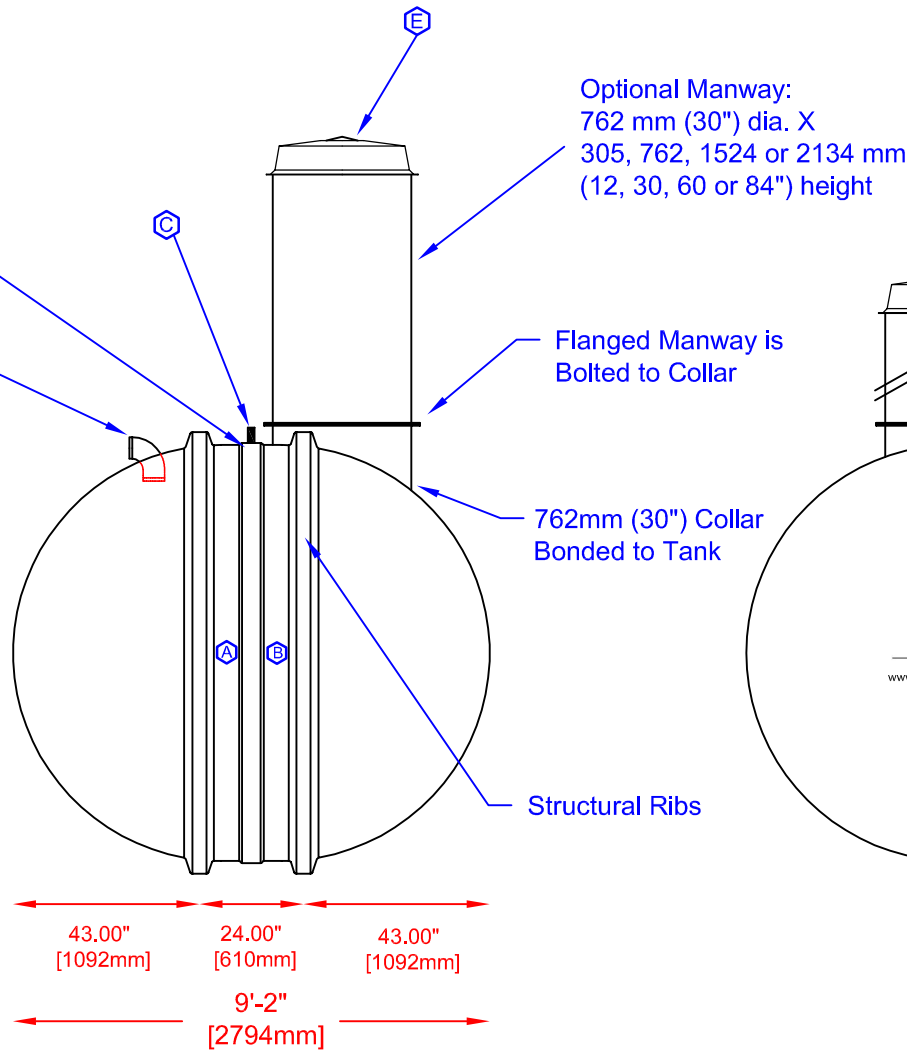
SECTION-JOINT DETAIL



Various fittings available including bulkhead fittings, pipe, flanged fittings, vents, etc. at extra cost.

Accessories available such as pump stand, divider wall(s), 2nd manway, lock bar for lid, etc. at extra cost.

8'-6"  
[2591mm]



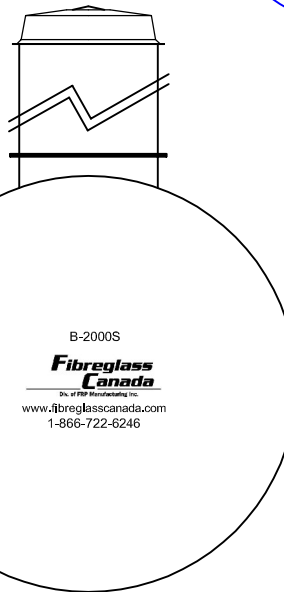
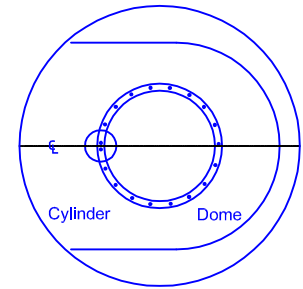
Optional Manway:  
762 mm (30") dia. X  
305, 762, 1524 or 2134 mm  
(12, 30, 60 or 84") height


Flanged Manway is Bolted to Collar

762mm (30") Collar Bonded to Tank

Structural Ribs

COLLAR ORIENTATION DETAIL



 Div. of FRP Manufacturing Inc.	<b>B-2000(S) FIBREGLASS SEWAGE HOLDING TANK</b>		DATE: 03-02-2007	DWG SCALE:
	Overall Length:	Approx. 2,794mm (9' 2")	BY: MARK SOLLID	REV: 0
	Overall Weight:	Approx. 400 kg (900 lbs)	DATE:	
	Overall Capacity:	Approx. 9,092L (2,000 Imp Gal, 2,400 US Gal)	APPROVAL:	

