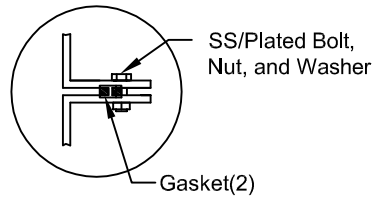


FLANGE CONNECTION DETAIL

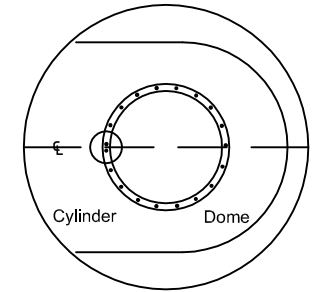


MATERIALS LIST

| ITEM | QTY | DESCRIPTION | ITEM | QTY | DESCRIPTION |
|------|-----|--|------|-----|----------------------|
| (A) | 1 | C-DOME-8-1250S | (B) | 1 | C-DOME-8-1250S-30COL |
| (C) | 1 | STEEL LIFTING LUG | (D) | 1 | 4" PVC-DWV ELBOW |
| (E) | 1 | C-LID-30IN-STD-W/8" POLY NONVENTED LID | | | |

* TANK COMES FULLY ASSEMBLED FROM FACTORY *

COLLAR ORIENTATION DETAIL



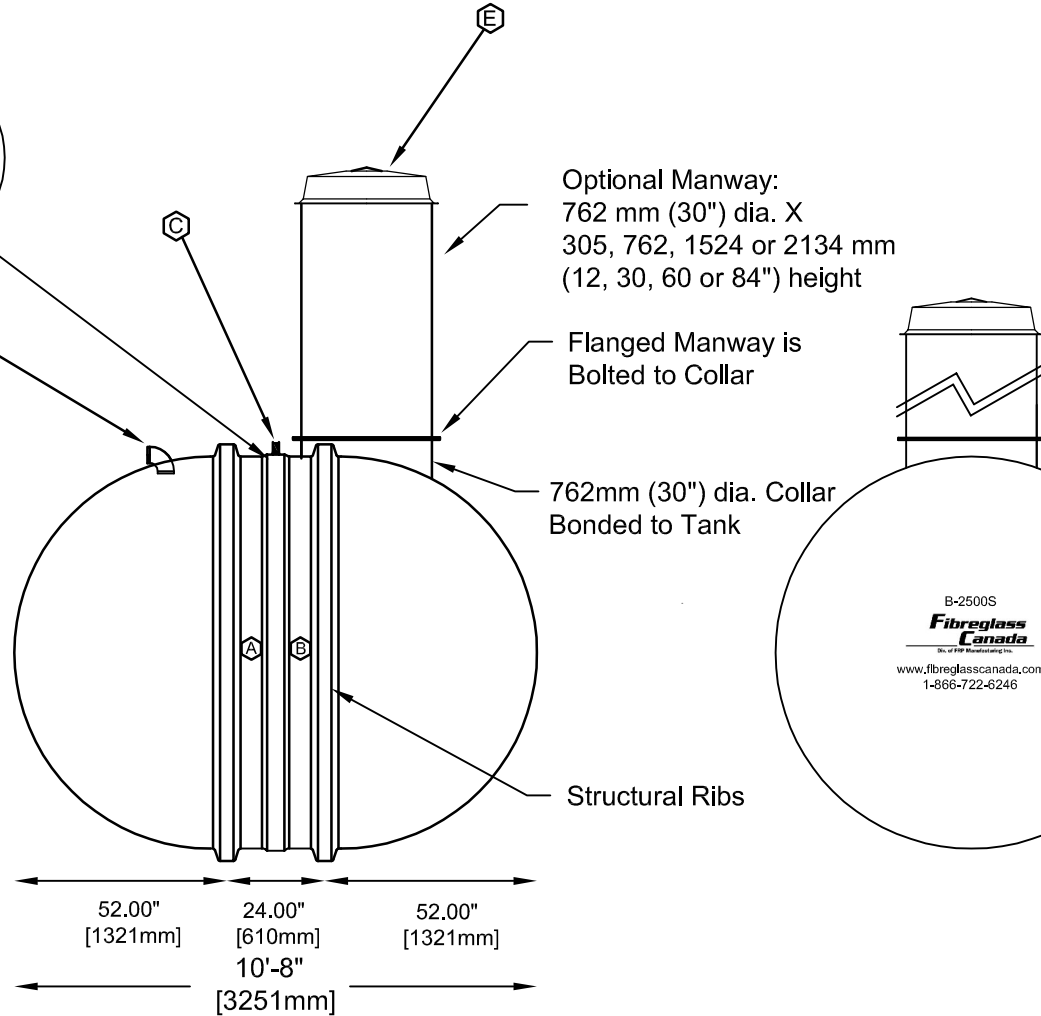
SECTION-JOINT DETAIL




Various fittings available including bulkhead fittings, pipe, flanged fittings, vents, etc. at extra cost.

8'-6"
[2578mm]

Accessories available such as pump stand, divider wall(s), 2nd manway, lock bar for lid, etc. at extra cost.



B-2500S
Fibreglass Canada
www.fibreglasscanada.com
1-866-722-6246

| | | | | |
|---|---|---|------------------|------------|
|  Div. of FRP Manufacturing Inc. | B-2500(S) FIBREGLASS SEWAGE HOLDING TANK | | DATE: 02-28-2007 | DWG SCALE: |
| | Overall Length: | Approx. 3,251mm (10' 8") | BY: MARK SOLLID | REV: 0 |
| | Overall Weight: | Approx. 500 kg (1,100 lbs) | DATE: | |
| | Overall Capacity: | Approx. 11,365L (2,500 Imp Gal, 3,000 US Gal) | APPROVAL: | |

