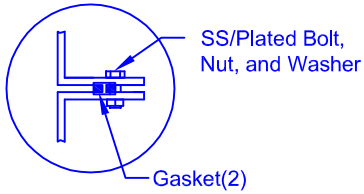
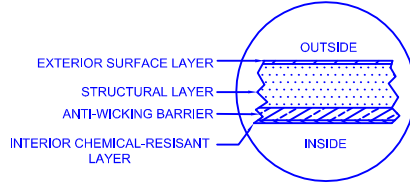


FLANGE CONNECTION DETAIL



LAMINATE DETAIL



MATERIALS LIST

ITEM	QTY	DESCRIPTION	ITEM	QTY	DESCRIPTION
A	1	C-DOME-8-1750S	B	1	C-DOME-8-1750S-30COL
C	1	STEEL LIFTING LUG	D	1	4" PVC-DWV ELBOW
E	1	C-LID-30IN-STD-W/8" POLY NONVENTED LID			

* TANK COMES FULLY ASSEMBLED FROM FACTORY *

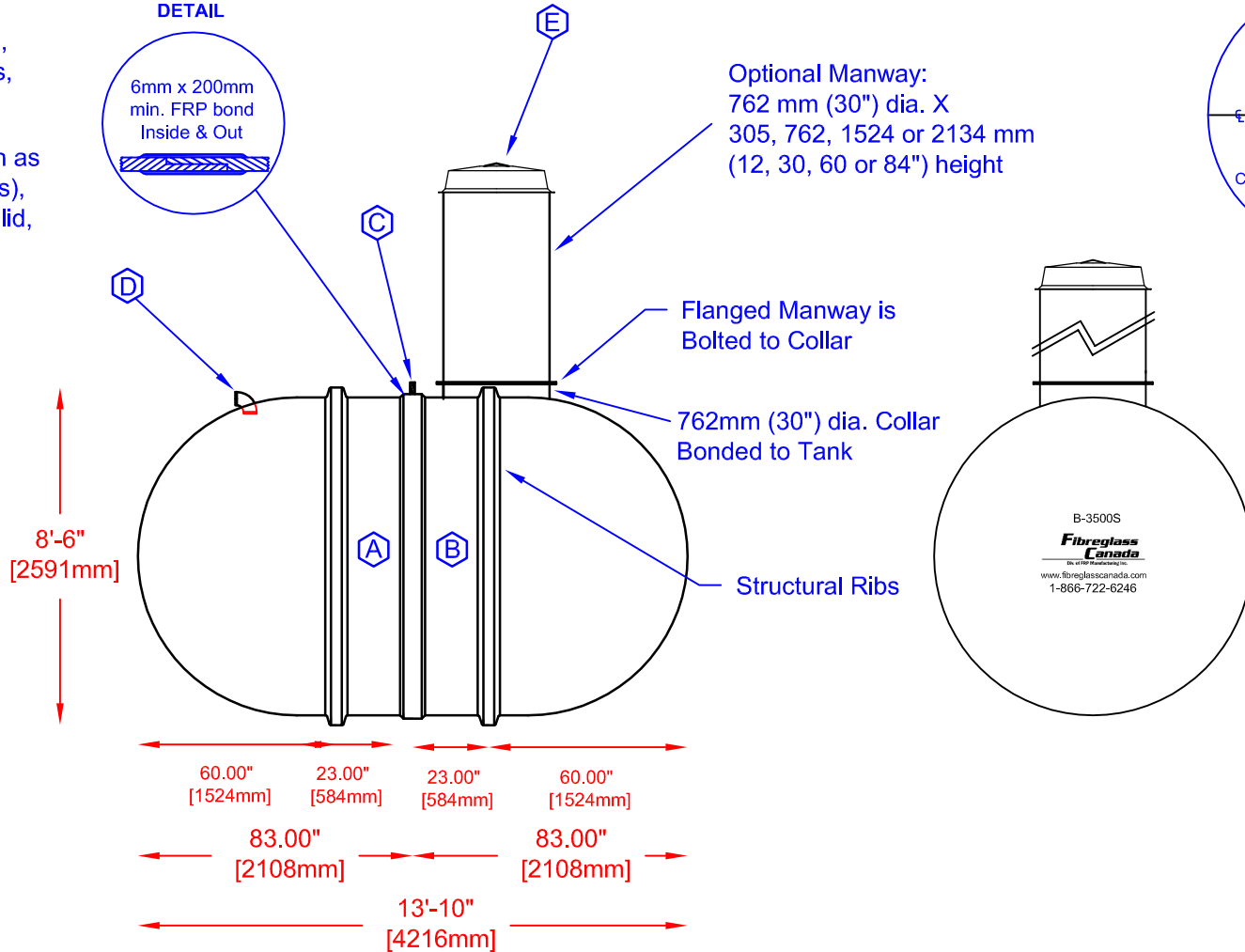
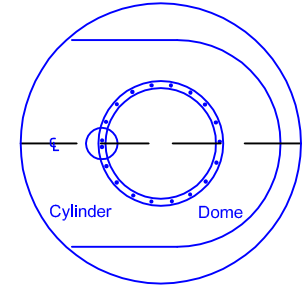
Various fittings available including bulkhead fittings, pipe, flanged fittings, vents, etc. at extra cost.

Accessories available such as pump stand, divider wall(s), 2nd manway, lock bar for lid, etc. at extra cost.

SECTION-JOINT DETAIL



COLLAR ORIENTATION DETAIL



Fibreglass Canada
Div. of FRP Manufacturing Inc.

B-3500(S) FIBREGLASS SEWAGE HOLDING TANK

Overall Length:	Approx. 4,216mm (13' 10")	DATE: 02-28-2007	DWG SCALE:
Overall Weight:	Approx. 675 kg (1,500 lbs)	BY: MARK SOLLID	REV: 0
Overall Capacity:	Approx. 15,911L (3,500 Imp Gal, 4,200 US Gal)	DATE:	
		APPROVAL:	

