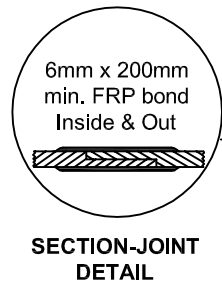
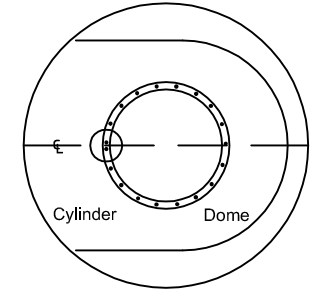


| MATERIALS LIST | | | | | |
|----------------|-----|--|------|-----|--------------------------|
| ITEM | QTY | DESCRIPTION | ITEM | QTY | DESCRIPTION |
| A | 1 | C-DOME-8-1250S | B | 1 | C-DOME-8-1250S-30COL |
| C | 1 | C-CYL-1500-S-W/BELL | D | 2 | STEEL LIFTING LUG |
| E | 1 | C-LID-30IN-STD-W/8" POLY NONVENTED LID | F | 1 | 4" PVC-DWV ELBOW - INLET |

* TANK COMES FULLY ASSEMBLED FROM FACTORY *

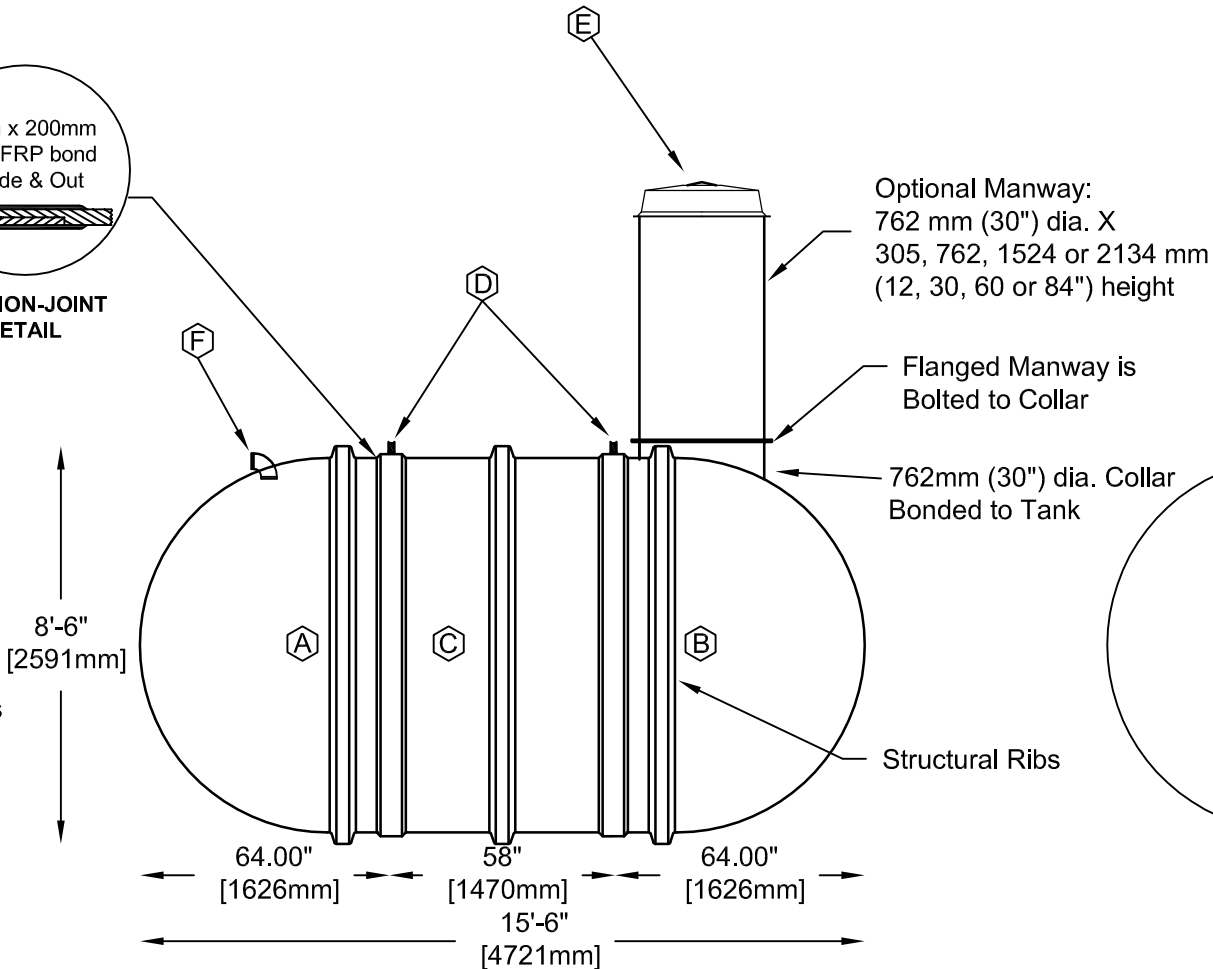



COLLAR ORIENTATION DETAIL



Various fittings available including bulkhead fittings, pipe, flanged fittings, vents, etc. at extra cost.

Accessories available such as pump stand, 2nd manway, ladder, lock bar for lid, etc. at extra cost.



| | | | | |
|---|---|---|------------------|------------|
|  Div. of FRP Manufacturing Inc. | B-4000(S) FIBREGLASS SEWAGE HOLDING TANK | | DATE: 05-15-2007 | DWG SCALE: |
| | Overall Length: | Approx. 4,721mm (15' 6") | BY: MARK SOLLID | REV: 0 |
| | Overall Weight: | Approx. 750 kg (1,650 lbs) | DATE: | |
| | Overall Capacity: | Approx. 18,184L (4,000 Imp Gal, 4,800 US Gal) | APPROVAL: | |

