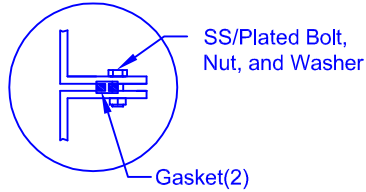
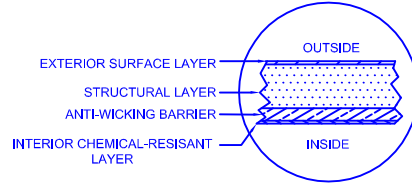


FLANGE CONNECTION DETAIL



LAMINATE DETAIL



MATERIALS LIST

ITEM	QTY	DESCRIPTION	ITEM	QTY	DESCRIPTION
A	1	C-DOME-8-1750S	B	1	C-DOME-8-1750S-30COL
C	1	C-CYL-1500-S-W/BELL	D	1	4" PVC-DWV ELBOW
E	1	C-LID-30IN-STD-W/8" POLY NONVENTED LID	F	2	STEEL LIFTING LUG

* TANK COMES FULLY ASSEMBLED FROM FACTORY *

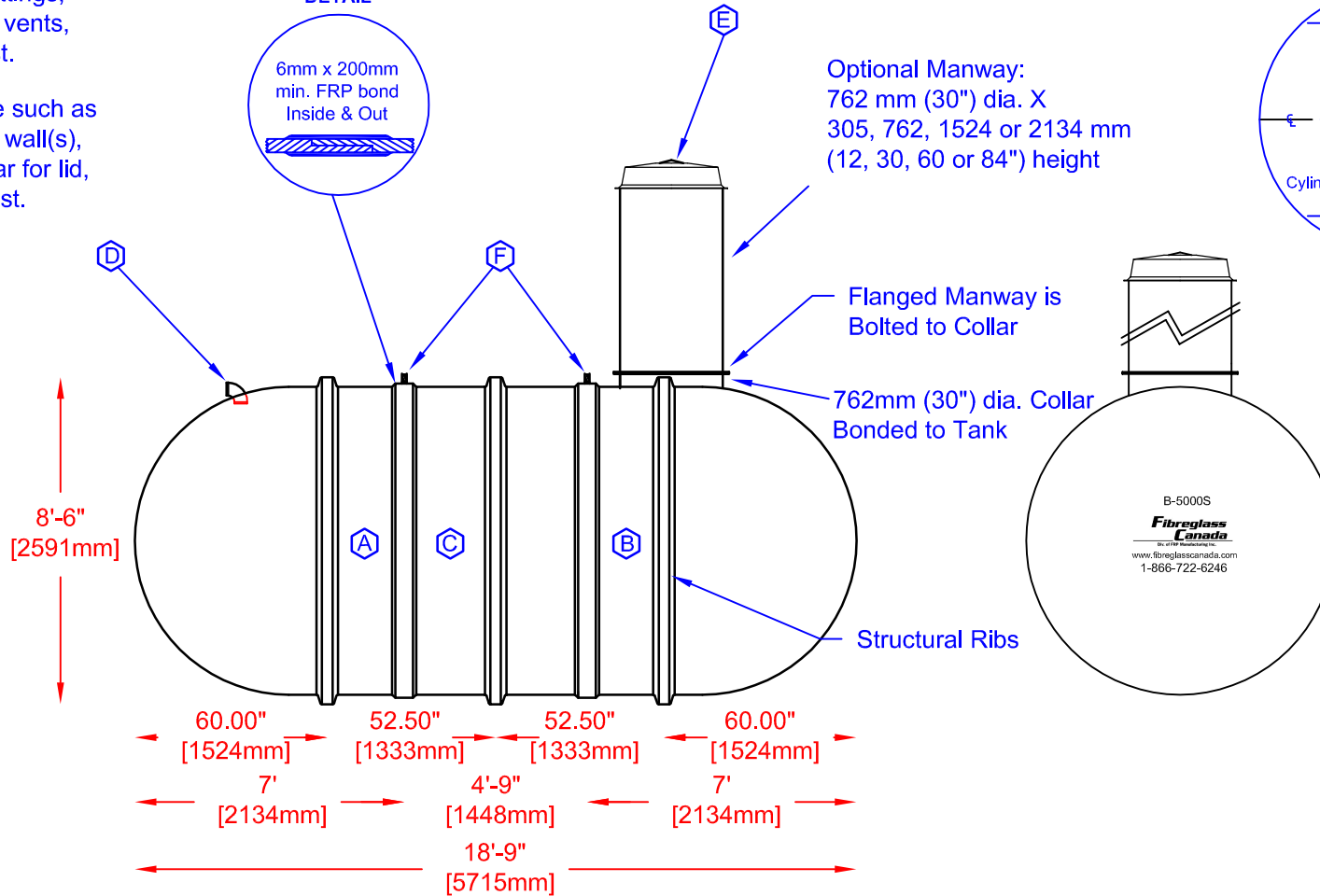
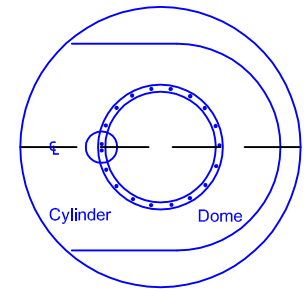
Various fittings available including bulkhead fittings, pipe, flanged fittings, vents, etc. at extra cost.


Accessories available such as pump stand, divider wall(s), 2nd manway, lock bar for lid, etc. at extra cost.

SECTION-JOINT DETAIL



COLLAR ORIENTATION DETAIL



 Div. of FRP Manufacturing Inc.	B-5000(S) FIBREGLASS SEWAGE HOLDING TANK		DATE: 02-28-2007	DWG SCALE:
	Overall Length:	Approx. 5,715mm (18' 9")	BY: MARK SOLLID	REV: 0
	Overall Weight:	Approx. 925 kg (2,050 lbs)	DATE:	
	Overall Capacity:	Approx. 22,730L (5,000 Imp Gal, 6,000 US Gal)	APPROVAL:	

