

MATERIALS LIST					
ITEM	QTY	DESCRIPTION	ITEM	QTY	DESCRIPTION
A	1	C-DOME-8-1750S	B	1	C-DOME-8-1750S-30COL
C	1	C-CYL-3500-S-W/BELL	D	1	4" PVC-DWV ELBOW
E	1	C-LID-30IN-STD-W/8" POLY NONVENTED LID	F	2	STEEL LIFTING LUG

* TANK COMES FULLY ASSEMBLED FROM FACTORY *

Various fittings available including bulkhead fittings, pipe, flanged fittings, vents, etc. at extra cost.

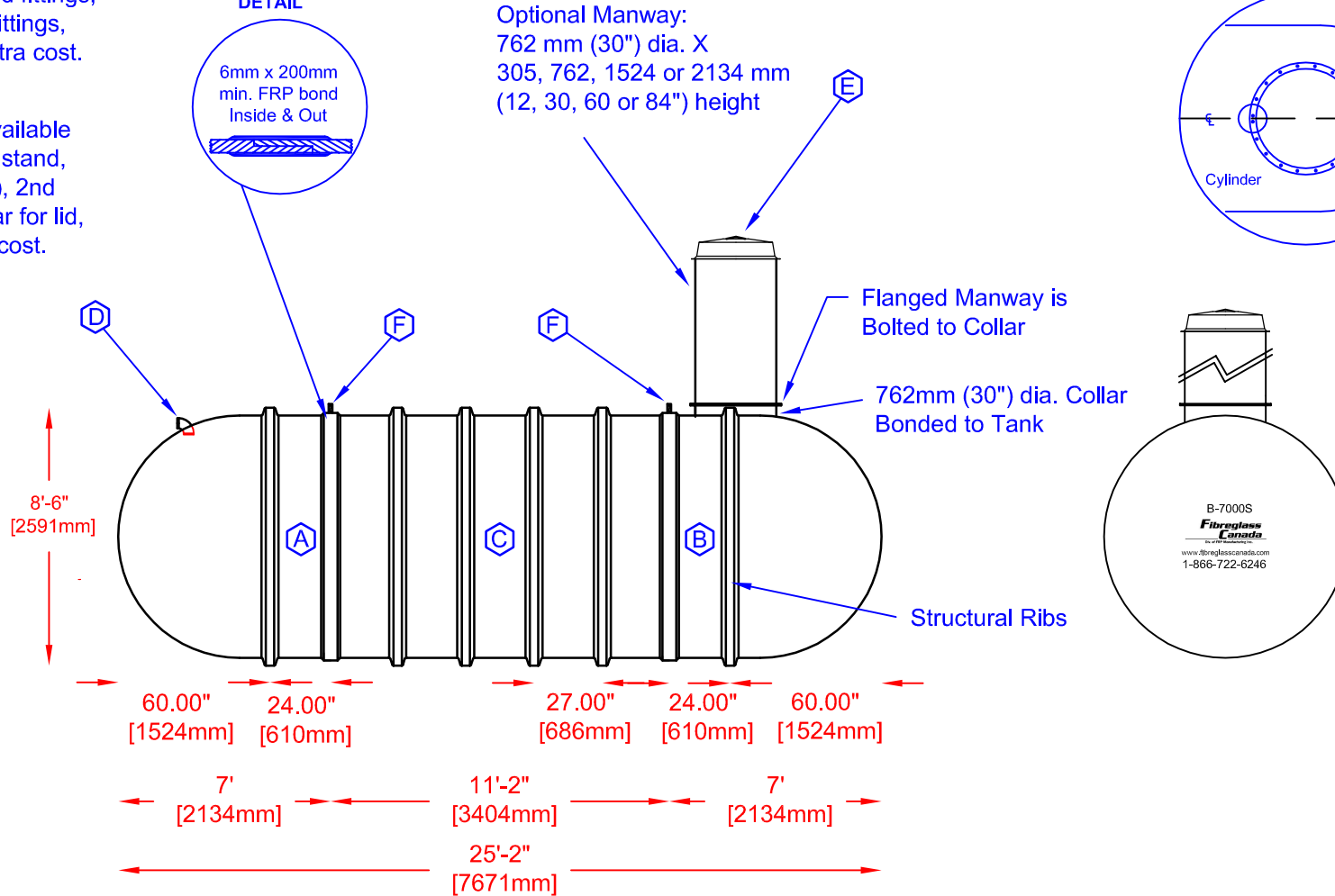
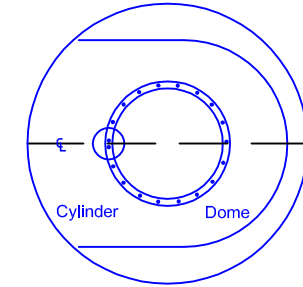
Accessories available such as pump stand, divider wall(s), 2nd manway, lock bar for lid, etc. at extra cost.

SECTION-JOINT DETAIL



Optional Manway:
762 mm (30") dia. X
305, 762, 1524 or 2134 mm
(12, 30, 60 or 84") height

COLLAR ORIENTATION DETAIL



 Fibreglass Canada Div. of FRP Manufacturing Inc.	B-7000(S) FIBREGLASS SEWAGE HOLDING TANK		DATE: 03-02-2007	DWG SCALE:
	Overall Length:	Approx. 7,671mm (25' 2")	BY: MARK SOLLID	REV: 0
	Overall Weight:	Approx. 1,250 kg (2,750 lbs)	DATE:	
	Overall Capacity:	Approx. 31,822L (7,000 Imp Gal, 8,400 US Gal)	APPROVAL:	

