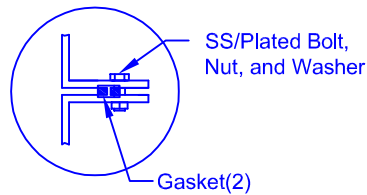


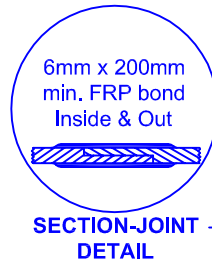
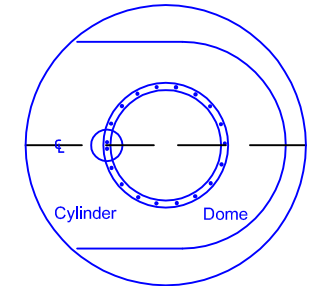
FLANGE CONNECTION DETAIL



MATERIALS LIST					
ITEM	QTY	DESCRIPTION	ITEM	QTY	DESCRIPTION
A	1	C-DOME-8-1000S	B	1	C-DOME-8-1000S-30COL
C	1	STEEL LIFTING LUG	D	1	2" FEMALE BLKHD - OUTLET
E	1	C-LID-30IN-STD-W/8" POLY VENTED LID			

\* TANK COMES FULLY ASSEMBLED FROM FACTORY \*

COLLAR ORIENTATION DETAIL



SECTION-JOINT DETAIL

Optional Manway:  
762 mm (30") dia. X  
305, 762, 1524 or 2134 mm  
(12, 30, 60 or 84") height

Flanged Manway is Bolted to Collar

762mm (30") dia. Collar Bonded to Tank

Various fittings available including bulkhead fittings, pipe, flanged fittings, vents, etc. at extra cost.

Accessories available such as pump stand, 2nd manway, ladder, lock bar for lid, etc. at extra cost.

8'-6"  
[2591mm]

43.00" [1092mm]    24.00" [610mm]    43.00" [1092mm]

9'-2"  
[2794mm]

Structural Ribs

B2000W  
**Fibreglass Canada**  
Div. of FRP Manufacturing Inc.  
www.fibreglasscanada.com  
1-866-722-6246

 Div. of FRP Manufacturing Inc.	<b>B-2000(W) FIBREGLASS WATER CISTERN</b>		DATE: 03-14-2007	DWG SCALE:
	Overall Length:	Approx. 2,794mm (9' 2")	BY: MARK SOLLID	REV: 0
	Overall Weight:	Approx. 408 kg (900 lbs)	DATE:	
	Overall Capacity:	Approx. 9,092L (2,000 Imp Gal, 2,400 US Gal)	APPROVAL:	



DRINKING WATER  
NSF/ANSI 61