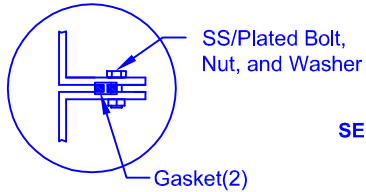


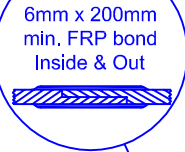
MATERIALS LIST					
ITEM	QTY	DESCRIPTION	ITEM	QTY	DESCRIPTION
A	1	C-DOME-8-1750S	B	1	C-DOME-8-1750S-30COL
C	4	C-CYL-3500-S-W/BELL	D	1	C-CYL-2500-S-W/BELL
E	4	STEEL LIFTING LUG	F	1	2" FEMALE BLKHD - OUTLET
G	1	C-LID-30IN-STD-W/8" POLY VENTED LID			

* TANK COMES FULLY ASSEMBLED FROM FACTORY *

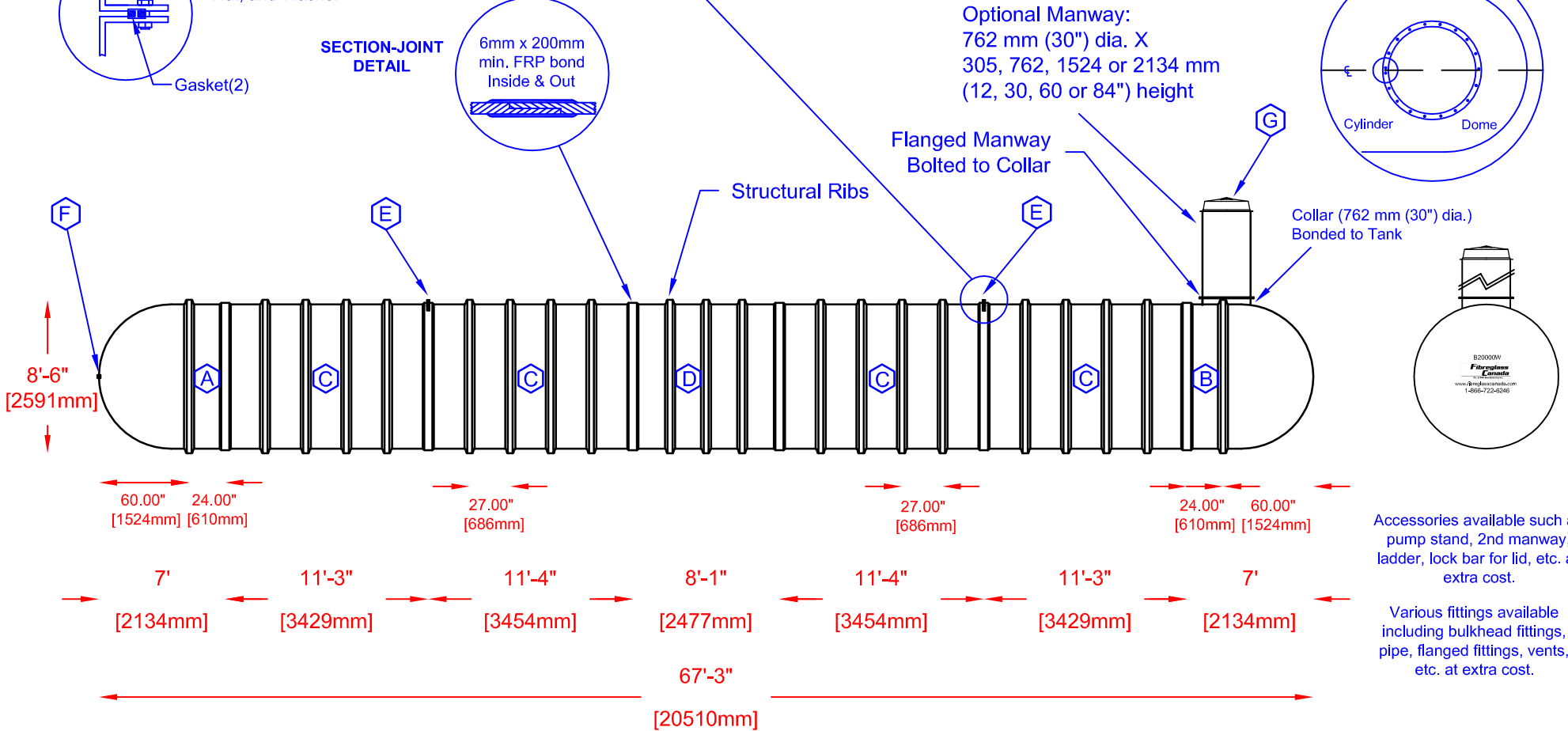
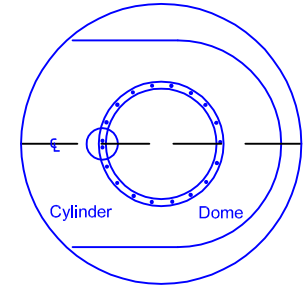
FLANGE CONNECTION DETAIL



SECTION-JOINT DETAIL



COLLAR ORIENTATION DETAIL



<p>Fibreglass Canada Div. of FRP Manufacturing Inc.</p>	B-2000(W) FIBREGLASS WATER CISTERN		DATE: 04-04-2007	DWG SCALE:
	Overall Length:	Approx. 20,510mm (67' 3")	BY: MARK SOLLID	REV: 0
	Overall Weight:	Approx. 3,400 kg (7,500 lbs)	DATE:	
	Overall Capacity:	Approx. 90,920L (20,000 Imp Gal, 24,000 US Gal)	APPROVAL:	



DRINKING WATER
NSF/ANSI 61