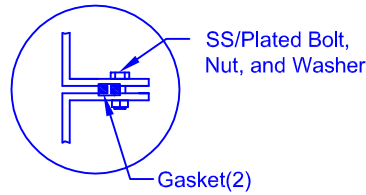


FLANGE CONNECTION DETAIL

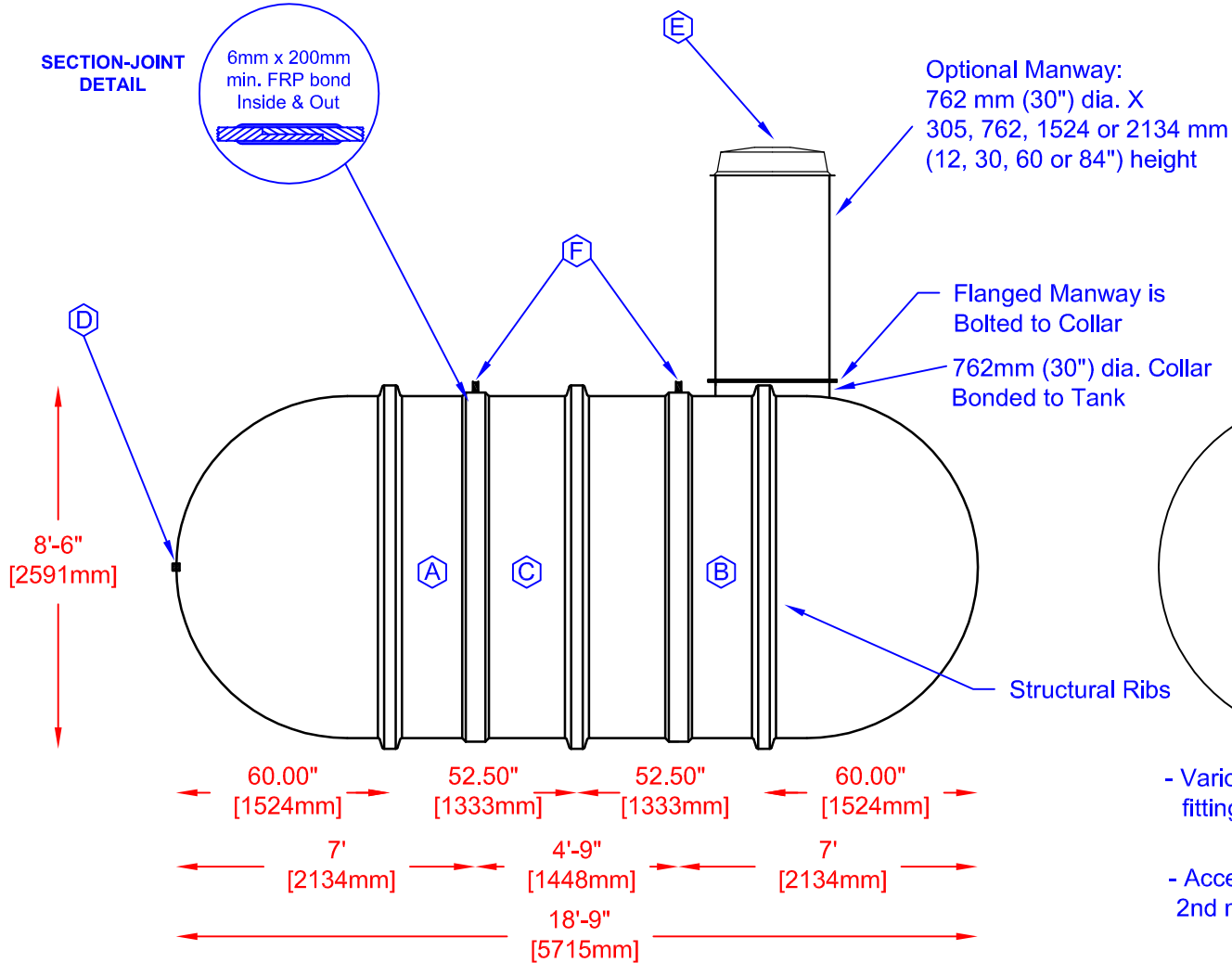


MATERIALS LIST

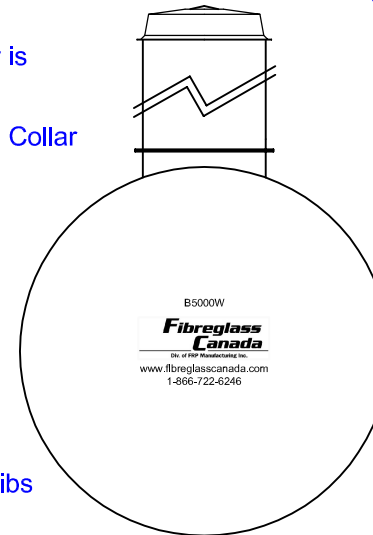
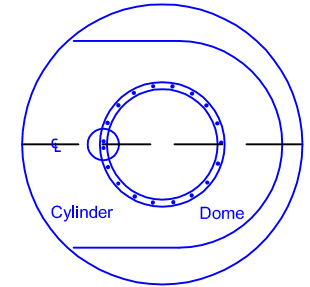
ITEM	QTY	DESCRIPTION	ITEM	QTY	DESCRIPTION
(A)	1	C-DOME-8-1750S	(B)	1	C-DOME-8-1750S-30COL
(C)	1	C-CYL-1500-S-W/BELL	(D)	1	2" FEMALE BLKHD - OUTLET
(E)	1	C-LID-30IN-STD-W/8" POLY VENTED LID	(F)	2	STEEL LIFTING LUG

* TANK COMES FULLY ASSEMBLED FROM FACTORY *

SECTION-JOINT DETAIL



COLLAR ORIENTATION DETAIL



- Various fittings available including bulkhead fittings, pipe, flanged fittings, vents, etc. at extra cost.
- Accessories available such as pump stand, 2nd manway, ladder, lock bar for lid, etc. at extra cost.

 Div. of FRP Manufacturing Inc.	B-5000(W) FIBREGLASS WATER CISTERN		DATE: 03-14-2007	DWG SCALE:
	Overall Length:	Approx. 5,715mm (18' 9")	BY: MARK SOLLID	REV: 0
	Overall Weight:	Approx. 925 kg (2,050 lbs)	DATE:	
	Overall Capacity:	Approx. 22,730L (5,000 Imp Gal, 6,000 US Gal)	APPROVAL:	

