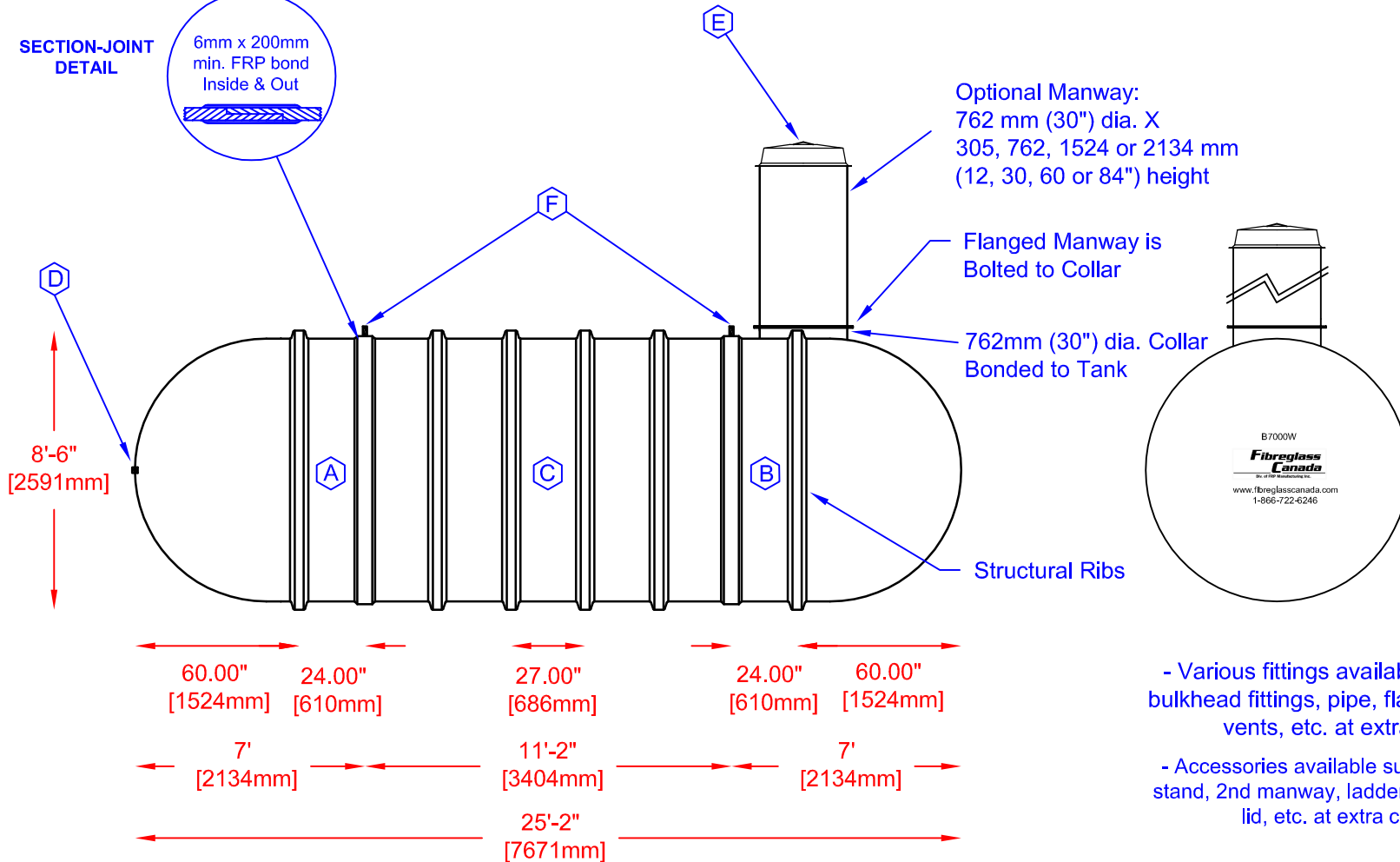
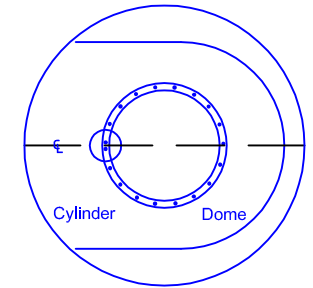


MATERIALS LIST					
ITEM	QTY	DESCRIPTION	ITEM	QTY	DESCRIPTION
A	1	C-DOME-8-1750S	B	1	C-DOME-8-1750S-30COL
C	1	C-CYL-3500-S-W/BELL	D	1	2" FEMALE BLKHD - OUTLET
E	1	C-LID-30IN-STD-W/8" POLY VENTED LID	F	2	STEEL LIFTING LUG

* TANK COMES FULLY ASSEMBLED FROM FACTORY *



COLLAR ORIENTATION DETAIL



- Various fittings available including bulkhead fittings, pipe, flanged fittings, vents, etc. at extra cost.

- Accessories available such as pump stand, 2nd manway, ladder, lock bar for lid, etc. at extra cost.

 Fibreglass Canada Div. of FRP Manufacturing Inc.	B-7000(W) FIBREGLASS WATER CISTERN		DATE: 02-28-2007	DWG SCALE:
	Overall Length:	Approx. 7,671mm (25' 2")	BY: MARK SOLLID	REV: 0
	Overall Weight:	Approx. 1,247 kg (2,750 lbs)	DATE:	
	Overall Capacity:	Approx. 31,822L (7,000 Imp Gal, 8,400 US Gal)	APPROVAL:	



DRINKING WATER
NSF/ANSI 61